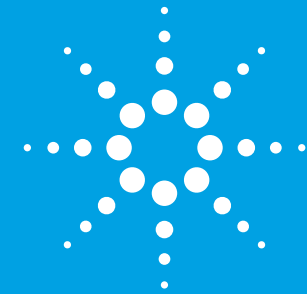


WHY CHANGE?

Top 3 Reasons to Upgrade to the NEW N9000A CXA Signal Analyzer*

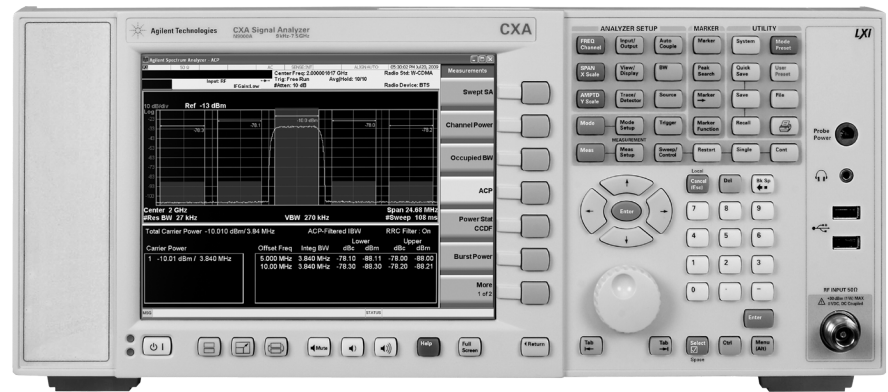
*If you currently own an ESA-L or 859xE/L Series Spectrum Analyzer (Trade-In ID #: T-WW-CM-001)

PREMIUM
TRADE-IN
SOLUTIONS



TOP 3 REASONS TO UPGRADE

1. **LOWER YOUR COST OF TEST AND GET DEVICES TO MARKET FASTER.**
2. **CREATE HIGHER-PERFORMANCE DEVICES USING TEST EQUIPMENT WITH IMPROVED CAPABILITIES, BETTER THROUGHPUT AND MORE EFFICIENT MEASUREMENTS.**
3. **GET THE GREATEST IMPACT FOR YOUR CAPITAL EXPENDITURE WITH UP TO 40% SAVINGS.**



1. LOWER YOUR COST OF TEST AND GET DEVICES TO MARKET FASTER.

We can help you:

- **Achieve the highest throughput.** The N9000A CXA provides a transfer speed 5X greater than the ESA-L Series and 20X greater than the 859xE Series.

- **Detect lower-level spurs and harmonics to achieve higher yields.** With DANL @1 GHz of -145 dBm, -159 dBm with pre-amp on, the CXA noise floor is 23 dB better than the ESA-L Series, 15 dB better than the 859xE Series and 30 dB better than the 859xL Series.

- **Minimize DUT failure rates.** The CXA phase noise is 8 dB better than previous technology, with a TOI 5.5 dB better than the ESA-L Series and 3 dB better than the 859xE/L Series.

- **Address the most measurement requirements across multiple products and programs.** The X-Series library contains more than 15 applications for better measurement application coverage and a higher return on your investment in measurement tools.



Agilent Technologies

REFRESH YOUR TECHNOLOGY AT A LOWER COST

PREMIUM
TRADE-IN
SOLUTIONS

2. CREATE HIGHER-PERFORMANCE DEVICES USING TEST EQUIPMENT WITH IMPROVED CAPABILITIES, BETTER THROUGHPUT AND MORE EFFICIENT MEASUREMENTS.

We can help you:

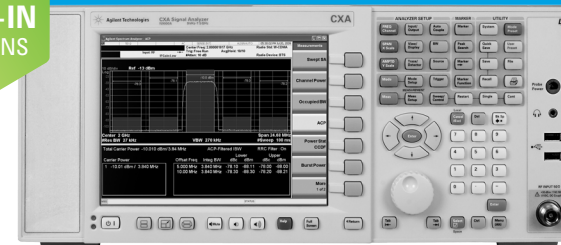
- **Get fast answers to all your questions.** The N9000A CXA provides full support by phone and email to help you optimize its capabilities; the 859xE/L Series has been discontinued and is no longer supported.
- **Enjoy easier and faster connectivity and data transfer.** The CXA includes standard LAN/GPIB/USB connectivity and is LXI-C compliant; previous technology has optional GPIB/RS-232 connectivity.
- **Shorten the learning curve.** The CXA includes a built-in content-sensitive help system that enables more efficient measurements; previous technology relies on a printed user's manual measurement tools.

3. GET THE GREATEST IMPACT FOR YOUR CAPITAL EXPENDITURE WITH UP TO 40% SAVINGS.

For a limited time, upgrade to the new N9000A CXA signal analyzer and receive a credit worth up to 40% when you trade an eligible model.

Trade-in model	Maximum Trade-in credit**
ESA-E spectrum analyzer	40%
<ul style="list-style-type: none"> ■ E4402B ■ E4404B 	
ESA-L spectrum analyzer	30%
<ul style="list-style-type: none"> ■ E4411B ■ E4403B ■ E4408B ■ N1996A 	
859xE Series spectrum analyzer	10%
<ul style="list-style-type: none"> ■ 8591E ■ 8593E ■ 8594E ■ 8595E ■ 8596E 	
859xL Series spectrum analyzer	10%
<ul style="list-style-type: none"> ■ 8590L ■ 8592L ■ 8594L 	

** Credit values are approximate and vary by currency. Contact your Agilent sales representative to find out how much you can save.



The N9000A CXA signal analyzer is a versatile, low-cost tool with better performance, greater speed and more applications than previous technology.

Upgrade TODAY

The Trade-in credit is good only for a limited time. To trade in your ESA-E, ESA-L or 859xE/L Series spectrum analyzer and receive credit toward the purchase of a new CXA signal analyzer, contact your Agilent sales representative or visit us online at www.agilent.com/find/trade-N9000A

Restrictions prohibit or limit this program in some countries. Please check our list of countries eligible for Agilent Trade-in at www.agilent.com/find/trade. Product specifications and descriptions, model eligibility and potential credits are all subject to change without notice. www.agilent.com

© Agilent Technologies, Inc. 2011 Printed in USA, March 22, 2011 5990-6311EN

WWW.AGILENT.COM/FIND/TRADE



Agilent Technologies